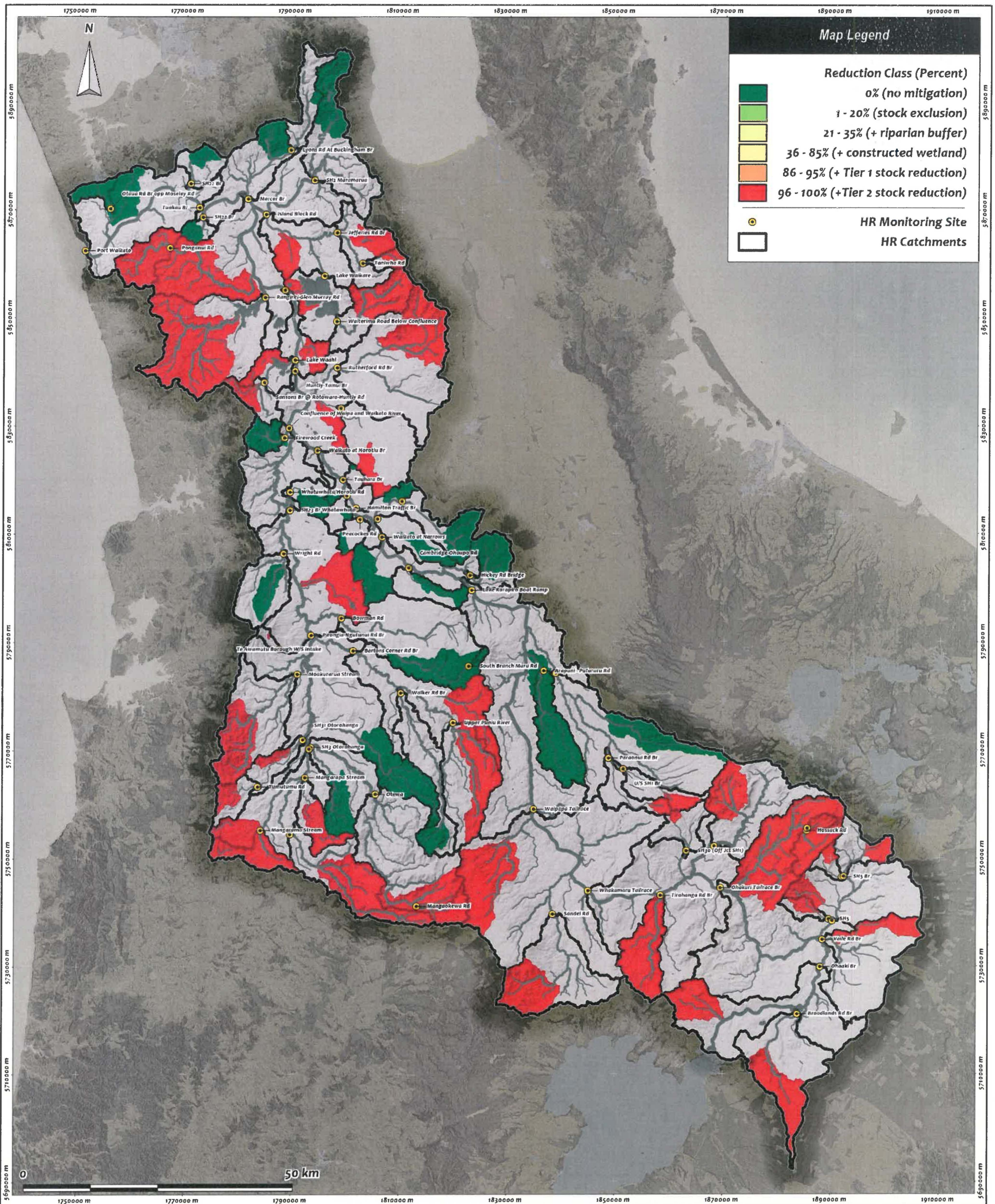


**Appendix MC5**

**Cox Figure 4 Enlargements**





**Map Legend**

**Reduction Class (Percent)**

- 0% (no mitigation)
- 1 - 20% (stock exclusion)
- 21 - 35% (+ riparian buffer)
- 36 - 85% (+ constructed wetland)
- 86 - 95% (+ Tier 1 stock reduction)
- 96 - 100% (+ Tier 2 stock reduction)

**HR Monitoring Site**

**HR Catchments**

# Mitigation Simulation Equal Cost Results: Dry Stock Farming

## Percent Reductions in Nitrogen Exports

**Mapping Issue Details**

Drawn by: (DESKTOP-NM081R1)	Date: Monday, 19 November 2018
Projection: New Zealand Transverse Mercator	Scale: 1:520000
Datum: New Zealand Geoid 2000	Scale Text: 1 cm = 5.2 km

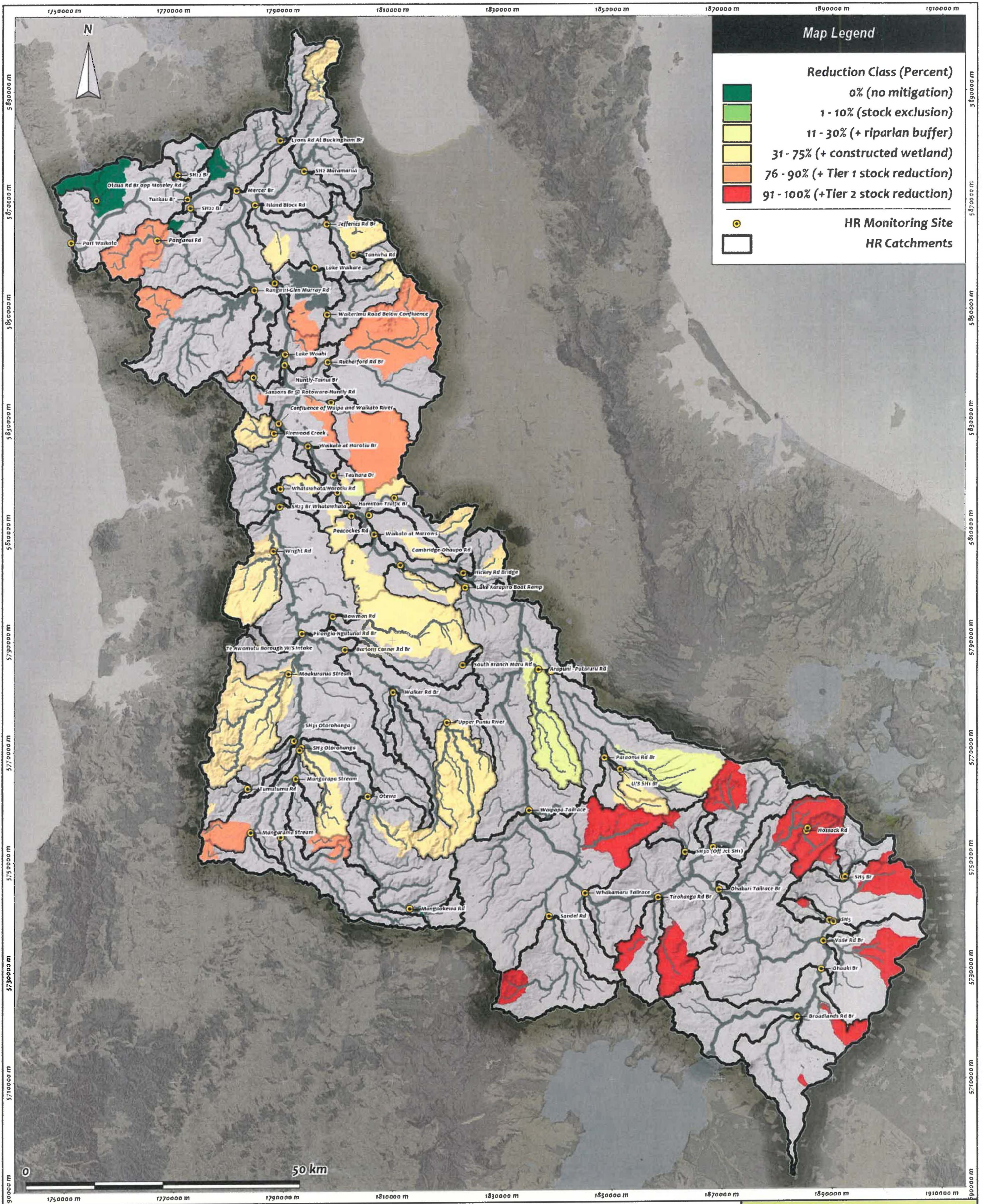
**Metadata & Acknowledgements**

© Waikato Regional Council 2018. Healthy Water Plan No. Change: WRP-DRY-18-001. WRP-DRY-18-001-001. Licensed under CC BY 4.0.



Streamlined Environmental Ltd  
PO Box 7003, Hamilton East, Hamilton 3247  
info@streamlined.co.nz

DISCLAIMER: The information provided on this map is intended to be general information only. While considerable effort has been made to ensure that the information provided on this map is accurate, current and adequate in all respects, S&L does not accept any responsibility for the content and shall not be responsible for, and excludes all liability for, any claims whatsoever arising from the use of this map.



# Optimal Mitigation Simulation Results: Dairy / Dairy Support Farming

## Percent Reductions in Nitrogen Exports

### Mapping Issue Details

Drawn by: (DESKTOP-NM0619V)	Date: Monday, 19 November 2016
Projection: New Zealand Transverse Mercator	Scale: 1:620000
Datum: New Zealand Geoid 2000	Scale Text: 1 cm : 6.24 km

### Metadata & Acknowledgements

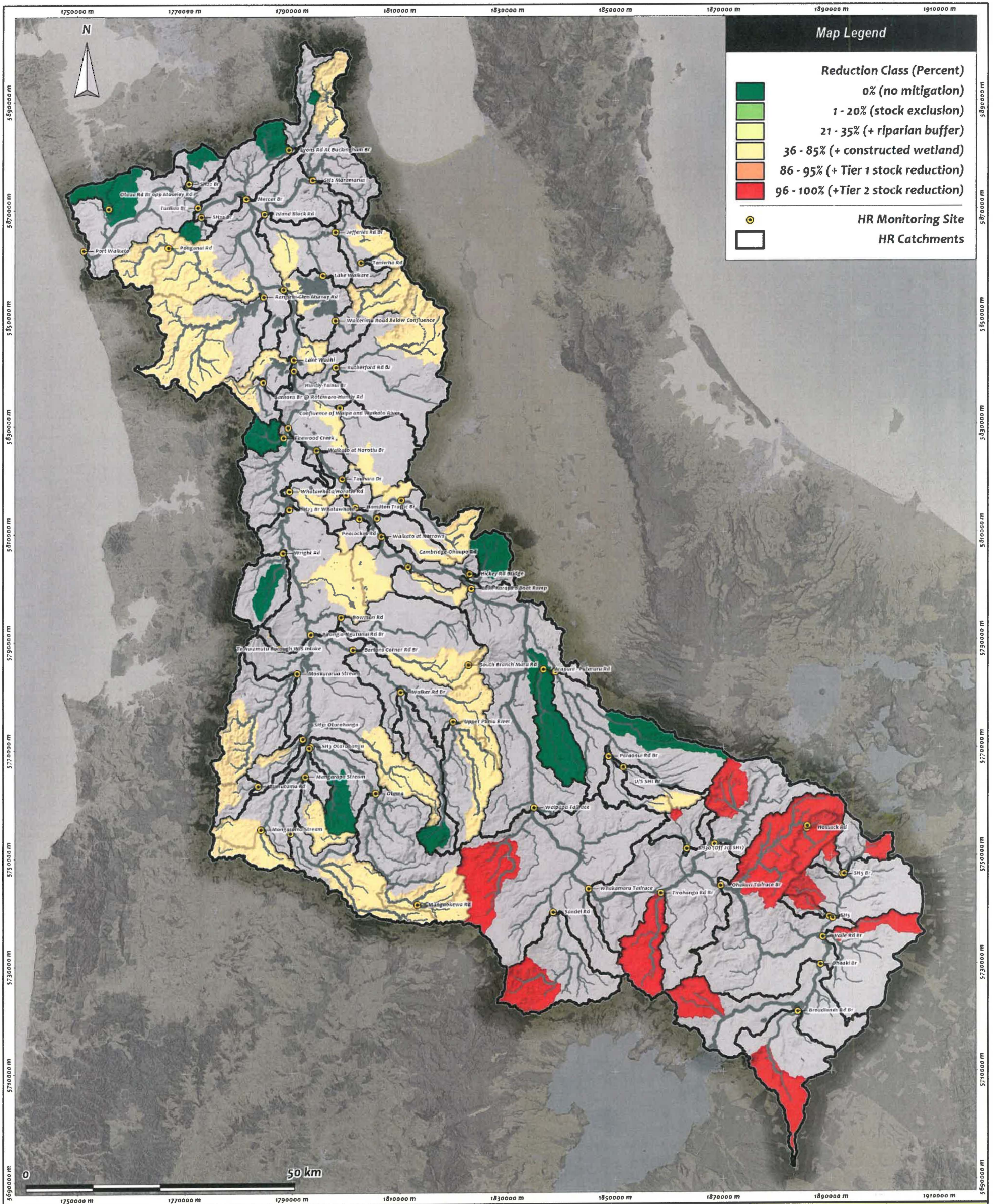
© Waikato Regional Council 2016. Healthy Rivers Plan for Change / Waikato Regional Council. Whakatauranga Data licensed under CC BY 4.0



Streamlined Environmental Ltd  
PO Box 7003, Hamilton East, Hamilton 3247

info@streamlined.co.nz

DISCLAIMER: The information provided on this map is intended to be general information only. While considerable effort has been made to ensure that the information provided on this map is accurate, current and adequate in all respects, SEL Ltd does not accept any responsibility for the content and shall not be responsible for, and excludes all liability for any claims whatsoever arising from the use of this map.



# Optimal Mitigation Simulation Results: Dry Stock Farming

Percent Reductions in Nitrogen Exports

### Mapping Issue Details

Drawn by: {DESKTOP-NM0819V}	Date: Monday, 19 November 2018
Projection: New Zealand Transverse Mercator	Scale: 1:620000
Datum: New Zealand Geodetic 2000	Scale Text: 1 cm = 6.2 km

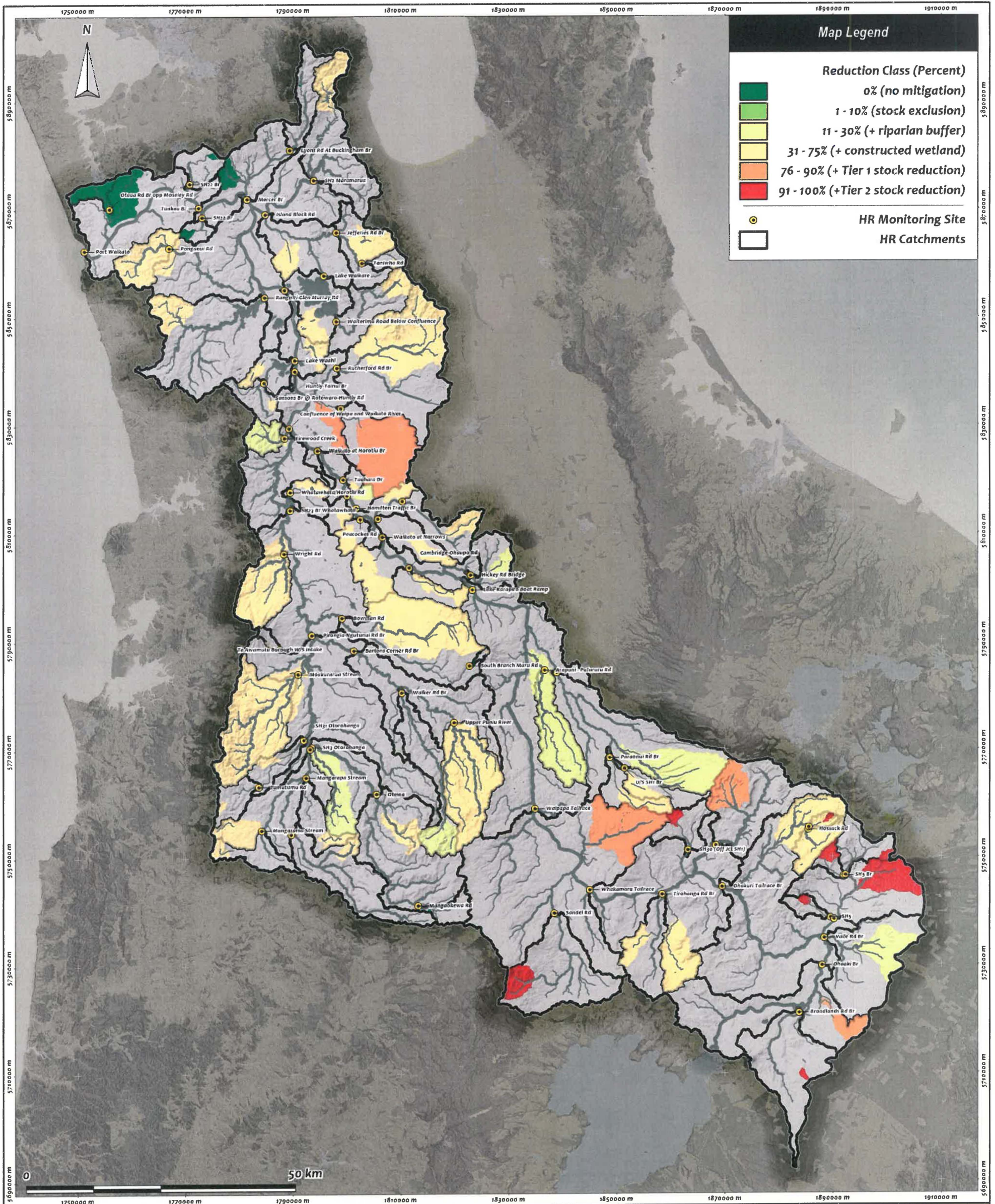
### Metadata & Acknowledgements

© Waikato Regional Council 2018. Healthy Rivers Plan for Change / Wai Ora He Rauwhakapapa Ora / Te Rauwhakapapa Ora. Licensed under CC BY 4.0



Streamlined Environmental Ltd  
PO Box 7003, Hamilton East, Hamilton 3247  
info@streamlined.co.nz

DISCLAIMER: The information provided on this map is intended to be general information only. While considerable effort has been made to ensure that the information provided on this map is accurate, correct and complete in all respects, Streamlined Environmental does not accept any responsibility for the content and shall not be responsible for, and excludes all liability for, any errors whatsoever arising from the use of this map.



**Map Legend**

**Reduction Class (Percent)**

- 0% (no mitigation)
- 1 - 10% (stock exclusion)
- 11 - 30% (+ riparian buffer)
- 31 - 75% (+ constructed wetland)
- 76 - 90% (+ Tier 1 stock reduction)
- 91 - 100% (+ Tier 2 stock reduction)

○ HR Monitoring Site

□ HR Catchments

# Mitigation with Point Sources Simulation Results: Dairy / Dairy Support Farming

## Percent Reductions in Nitrogen Exports

Mapping Issue Details	
Drawn by: (DESKTOP-NM081RV)	Date: Monday, 19 November 2018
Projection: New Zealand Transverse Mercator	Scale: 1:620000
Datum: New Zealand Geodetic 2000	Scale Text: 1 cm = 24 km

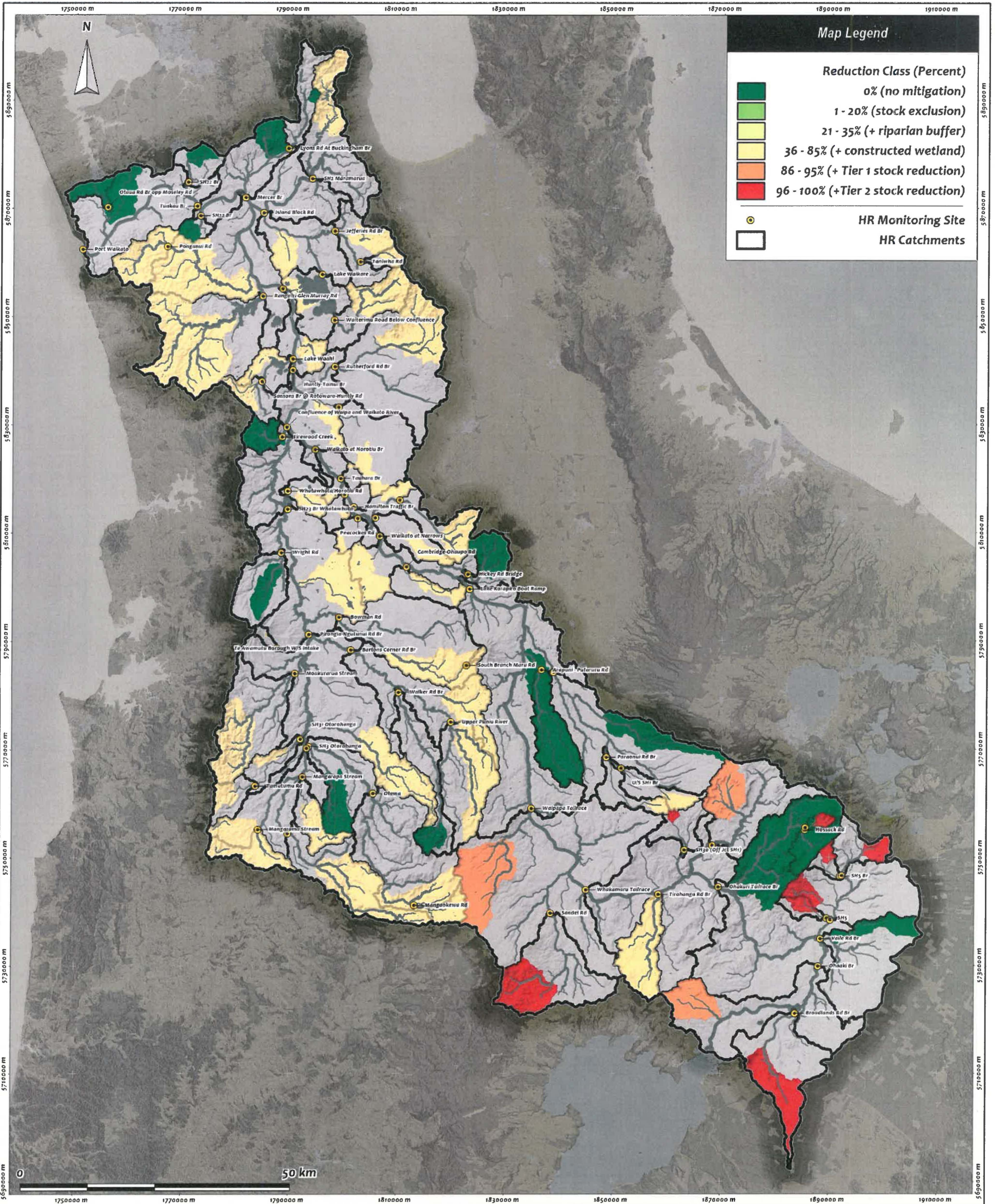
**Metadata & Acknowledgements**

© Waikato Regional Council 2018. All rights reserved. No part of this publication may be reproduced, stored in a retrieval system, or transmitted, in any form or by any means, without the prior written permission of the Waikato Regional Council.



Streamlined Environmental Ltd  
PO Box 7003, Hamilton East, Hamilton 3247  
info@streamlined.co.nz

DISCLAIMER: The information provided on this map is intended to be general information only. While considerable effort has been made to ensure that the information provided on this map is accurate, correct and adequate in all respects, SEI Ltd does not accept any responsibility for the content and shall not be responsible for, and excludes all liability for any claims whatsoever arising from the use of this map.



**Map Legend**

**Reduction Class (Percent)**

- 0% (no mitigation)
- 1 - 20% (stock exclusion)
- 21 - 35% (+ riparian buffer)
- 36 - 85% (+ constructed wetland)
- 86 - 95% (+ Tier 1 stock reduction)
- 96 - 100% (+ Tier 2 stock reduction)

HR Monitoring Site

HR Catchments

# Mitigation with Point Sources Simulation Results: Dry Stock Farming

## Percent Reductions in Nitrogen Exports

**Mapping Issue Details**

Drawn by: ( DESKTOP-NM081R1 )	Date: Monday, 19 November 2018
Projection: New Zealand Transverse Mercator	Scale: 1:620000
Datum: New Zealand Geoid 2000	Scale Text: 1 cm = 6.24 km

**Metadata & Acknowledgements**

© Waikato Regional Council 2018. All Rights Reserved. No part of this publication may be reproduced, stored in a retrieval system, or transmitted in any form or by any means, without the prior written permission of the copyright owner.



Streamlined Environmental Ltd  
PO Box 7003, Hamilton East, Hamilton 3247  
info@streamlined.co.nz

DISCLAIMER: The information provided on this map is intended to be general information only. While considerable effort has been made to ensure that the information provided on this map is accurate, current and complete in all respects, SEI Ltd does not accept any responsibility for the content and shall not be responsible for, and excludes all liability for any claims whatsoever arising from the use of this map.