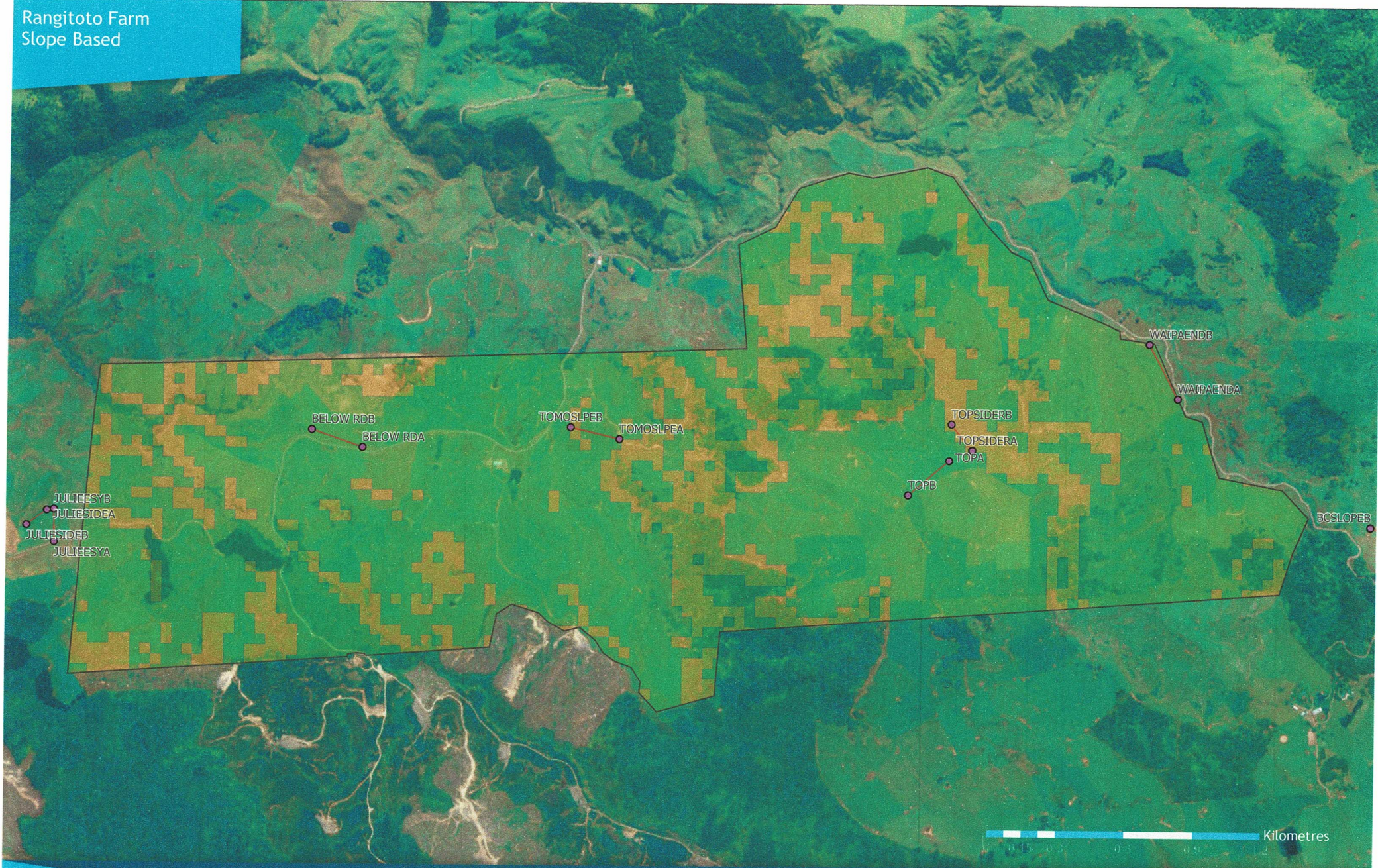


Rangitoto Farm
Slope Based



Super Air Limited
34 Ingram Road, Rukuhia, Hamilton
Free phone: 0800 787 372
Phone: 07 843 6066
Email: reception@superair.co.nz
www.superair.co.nz

Map Information

Date	13/12/2016
Property SAP ID	4001455
Nutrient Specialist	Aaron Pemberton
Scale	Scale 1:14,103
GPS Projection	New Zealand Transverse Mercator

Legend

- Slope Categories
- 0 - 15 Degrees (541.5 Hectares)
 - Over 15 Degrees (185.5 Hectares)



Area is calculated as Surface Area based on 15m DEM (NZDEM_SoS_v1.0 - University of Otago)



Waipa Farm Slope Based



Super Air Limited
 34 Ingram Road, Rukuhia, Hamilton
 Free phone: 0800 787 372
 Phone: 07 843 6066
 Email: reception@superair.co.nz
 www.superair.co.nz

Map Information

Date	13/12/2016
Property SAP ID	4001457
Nutrient Specialist	Aaron Pemberton
Scale	Scale 1:16,619
GPS Projection	New Zealand Transverse Mercator

Legend

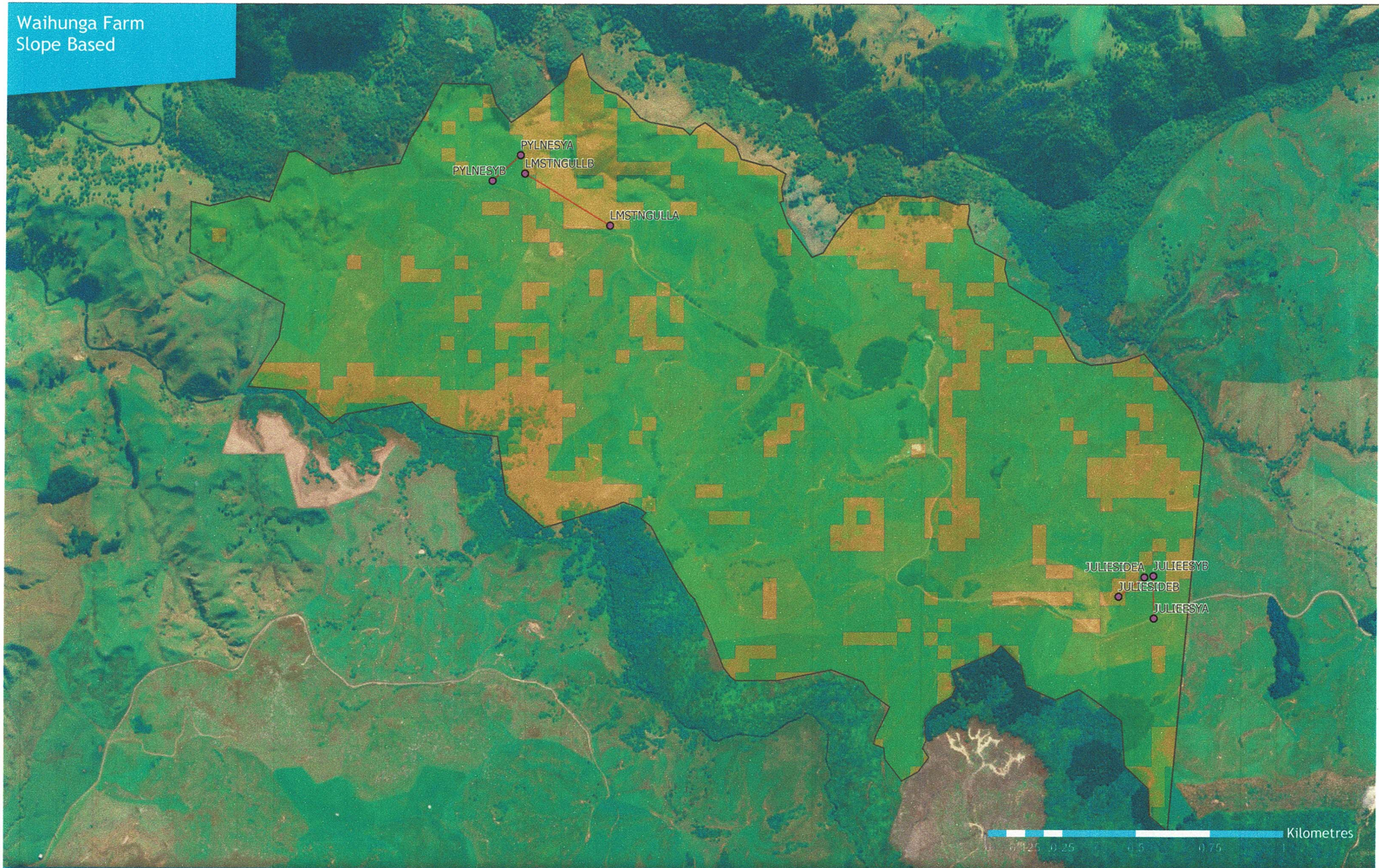
- Slope Categories
- 0 - 15 Degrees (637.4 Hectares)
 - Over 15 Degrees (104.7 Hectares)



Area is calculated as Surface Area based on 15m DEM (NZDEM_SoS_v1.0 - University of Otago)



Waihunga Farm Slope Based



Super Air Limited
34 Ingram Road, Rukuhia, Hamilton
Free phone: 0800 787 372
Phone: 07 843 6066
Email: reception@superair.co.nz
www.superair.co.nz

Map Information

Date	13/12/2016
Property SAP ID	4001456
Nutrient Specialist	Aaron Pemberton
Scale	Scale 1:10,924
GPS Projection	New Zealand Transverse Mercator

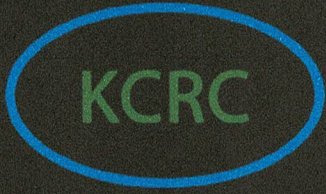
Legend

- 0 - 15 Degrees (329.0 Hectares)
- Over 15 Degrees (101.8 Hectares)



Area is calculated as Surface Area based on 15m DEM (NZDEM_So5_v1.0 - University of Otago)





King Country River Care

Farmers taking charge of improving the environment together with the community



Farming for a sustainable environment

Promoting farm profitability

Keeping our communities strong

KCRC is an incorporated society with two primary objectives that are interconnected. To Facilitate and promote “on farm good practice” of sustainable land management principles. This includes identifying good management practice already being done on farms and highlighting this to external stakeholders. Secondly to ensure our regions farmers have a voice and representation in the development of policy.

Farming for a sustainable environment

Monitor water quality. Understand current state and measure changes.

Source funding for sub-catchment projects.

Improve water quality with localised solutions.

Provide members with tools and support to best manage their resources and make positive changes.

Promoting farm profitability

Have a strong collective voice when dealing with regulators.

Show robust evidence on the economic impacts of local farming.

Ensure the continued financial viability of farming in our area.

Keeping our communities strong

Protect the culture and economy of our wider communities.

Show that sustainable environments and communities can be achieved together.

Ensure our communities are able to thrive.

Email: kcrivercare@gmail.com

 www.facebook.com/kcrivercare