

Sourced from the LINZ Data Service and licensed for re-use under the Creative Commons Attribution 3.0 New Zealand license

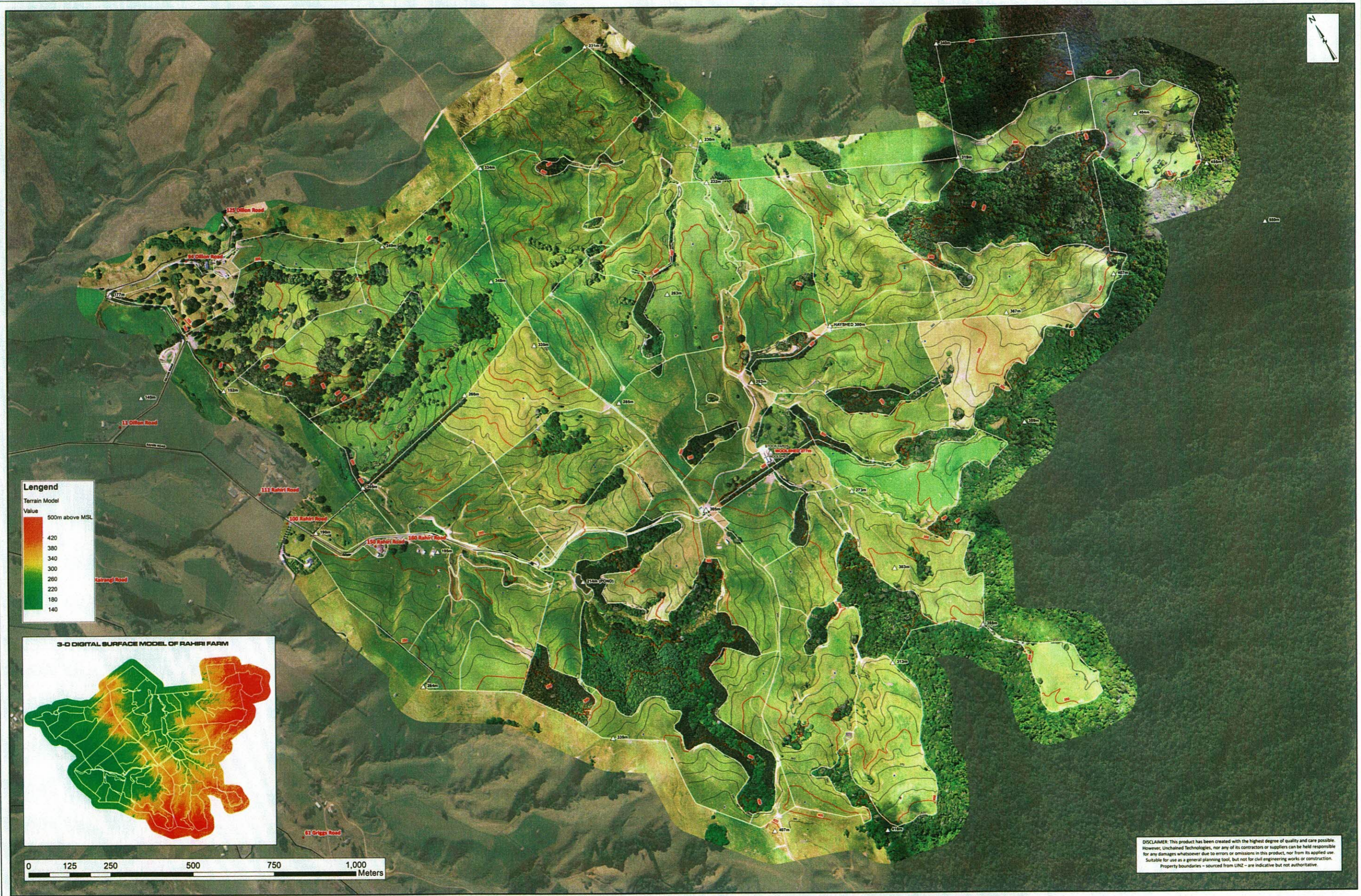
RAHIRI FARM : WATERSHEDS



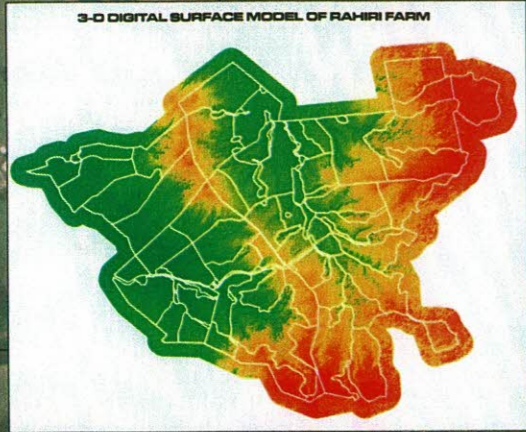
WWW.UNCHAINEDTECHNOLOGIES.COM

DRONE MAPPING 14 JANUARY 2015
 PIXEL RESOLUTION 10 cm
 PROJECTION NZTM2000
 WATERSHED MODEL 1m CELLSIZE
 MAP CREATED 15 AUGUST 2017
 JOB REFERENCE 1775

info@unchainedtechnologies.com



Lengend
 Terrain Model
 Value
 500m above MSL
 420
 380
 340
 300
 260
 220
 180
 140



0 125 250 500 750 1,000 Meters

DISCLAIMER: This product has been created with the highest degree of quality and care possible. However, Unchained Technologies, nor any of its contractors or suppliers can be held responsible for any damages whatsoever due to errors or omissions in this product, nor from its applied use. Suitable for use as a general planning tool, but not for civil engineering works or construction. Property boundaries - sourced from LINZ - are indicative but not authoritative.



RAHIRI FARM - CONTOUR MAP (10m)

DATE FLOWN: 14 JANUARY 2015
 PIXEL RESOLUTION: 10 cm
 PROJECTION: NZTM2000
 UAV PLATFORM: SENSELY WISEE
 SOFTWARE: ESRI ARCGIS v10.2
 MAPPED BY: PROREGAN
 CREATED: 19 JANUARY 2015
 www.unchainedtechnologies.com