

CNI Iwi Holdings Ltd

Corporate Trustee for the

the CNI Iwi Collective

Collaborative Stakeholders Group
June 2015
Tuwharetoa

CNI Iwi Holdings Limited



Toi tu te whenua....

Whatu ngarongaro te tangata...

People may come and go....

The land remains forever...



Timeline

- 1900's Through illegal means land was confiscated/acquired by the Crown
- 1980's to 2005- Crown and Iwi tried to work towards settlement using various approaches.
- 2005- Iwi met to discuss a collective approach led by Te Ariki Tumu Te Heuheu
- 2008 CNI Iwi Collective Deed of settlement was signed..

The People

Ngāti Whakaue
Ngāti Rangitahi
Te Pūmāutanga o Te Arawa
Ngāti Tūwharetoa
Ngāti Manawa
Ngai Tūhoe
Raukawa
Ngāti Whare

“Collectively the CNI Iwi represent over 110,000 people”

The Land

In June 2009 the 8 Iwi received 176,000ha of Central North Island Forest land.

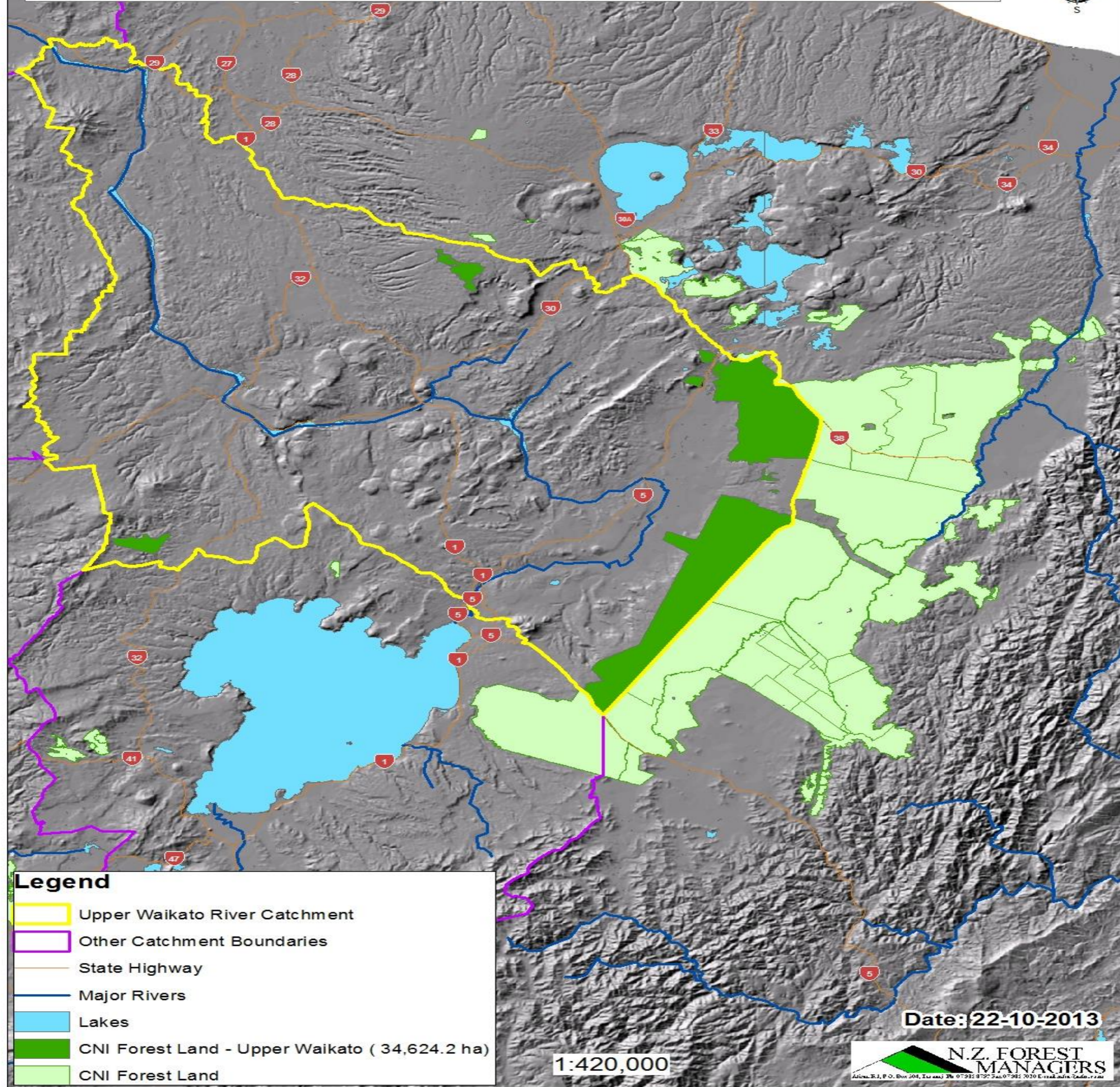
Land returned is leased under Crown Forestry Licenses i.e. Committed to 35 years Forestry.

Mostly the Kaingaroa forest and smaller satellite forests.

Circa 40,000 Hectares within the Waikato River Catchment



CNI Forest Lands in Upper Waikato River Catchment





CNI Iwi Holdings Ltd

Is governed by a Board of 16 Directors (2 directors per Iwi)

CNIHL holds and manages the land until 2043.

Outsources land management to their own subsidiary company, CNI Iwi Land Management Ltd.

Has formal processes to receive and distribute circa 15 Million dollars of revenue flowing from the land to the shareholders.

Has developed a forest access policy for beneficial owners in partnership with Timberlands.

The CNI Iwi Collective:

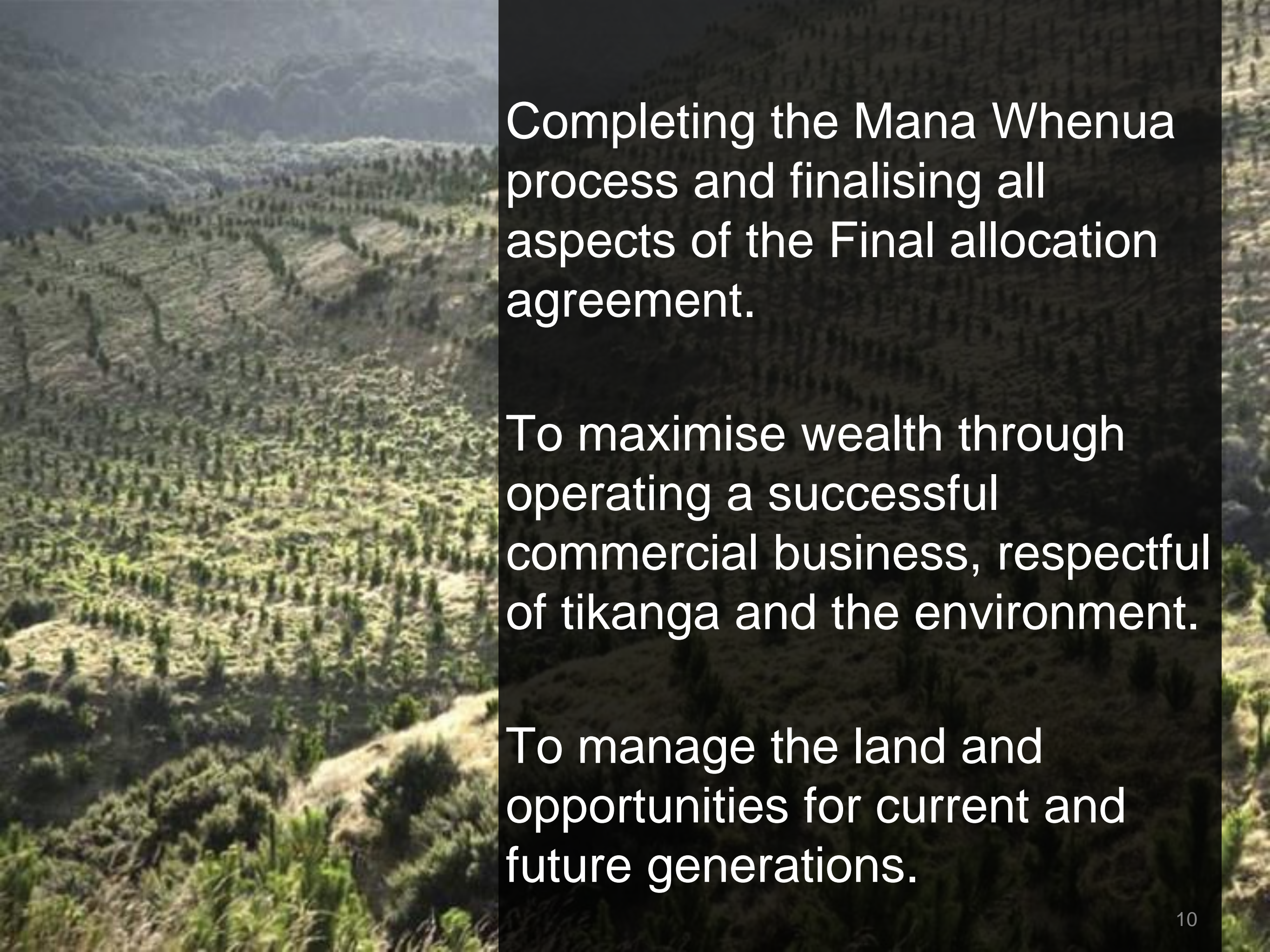
The 8 Iwi of the Collective receive annual income from the Trust and utilise this putea for Social, Cultural and Economic projects .

Five of the Iwi have completed treaty settlements with the Crown.

Three of the CNI Iwi Collective are in the process of negotiating their settlements with the Crown.



Challenges



Completing the Mana Whenua process and finalising all aspects of the Final allocation agreement.


To maximise wealth through operating a successful commercial business, respectful of tikanga and the environment.

To manage the land and opportunities for current and future generations.



Crown Forest Licenses- locked into forestry for 35years


To unlock the potential of the land as a component of future-proofing wealth creation and stability for our beneficiaries.



Aspirations



Create a future for our people where opportunities abound and we have a thriving, happy, prosperous community.*



Maximising our primary
industry and natural
resources.*

To grow and build a
prosperous future for our
mokopuna.*


Deliver intergenerational
assets and income.



Achieving best practice in all our dealings and relationships.

Working with long term partners who can add value.

Keeping the land collectively owned



Thank you
Tēnā koutou