

Report to the Collaborative Stakeholder Group – To be received

File No: 23 10 12

Date: 2 September 2014

To: Collaborative Stakeholder Group

From: Bill Wasley – Interim Chairperson, Collaborative Stakeholder Group

Subject: **Freshwater Management Units – report back on current thinking for the Waikato and Waipa catchments**

Section **Agreement and Approval**

1 Purpose

The purpose of this report is to record the progress the CSG has made towards identifying Freshwater Management Units as of CSG5.

Recommendation:

1. That the report “Freshwater Management Units – report back on current thinking for the Waikato and Waipa catchments” (Doc #3151912 dated 2 September 2014) be received for information.

The Collaborative Stakeholder Group agree that

2. As a holding pattern, Option 3 with the lakes overlay be used as a basis for further technical and policy work and thinking by CSG, on the understanding that with additional information, the CSG may revisit this and choose a different FMU option.

2 Background

Freshwater Management Units (FMUs) are a way of dividing catchments into units for the purpose of setting limits and targets and for freshwater accounting and management purposes. Identification of FMUs is required to give effect to the National Policy Statement Freshwater Management (NPSFM).

At CSG5 (August 2014), the Technical Leaders Group presented the CSG with FMU options for the Waikato and Waipa catchments, together with characteristics of each option and criteria which might be used to delineate the options. The options and criteria were outlined in a report from the TLG to the CSG¹ (DM#3121490). Four options for dividing the catchment and a shallow lakes overlay were considered. The lakes were identified as

¹ Freshwater Management Unit options for consideration by the Collaborative Stakeholder Group. Technical Leaders Group report for discussion at CSG workshop 5.

relevant to all options, on the basis that they do not currently meet the national bottom lines for attributes set out in the NPSFM.

Following the presentation and discussion, CSG members were asked to indicate their preferred FMU option.

3 Preferred FMUs

The option which was most preferred (11 votes) was Option 3 (Appendix 1). Option 3 together with the shallow lakes overlay identifies five FMUs: Upper Waikato, Middle Waikato (Karapiro to Ngaruawahia), Lower Waikato, Waipa and the catchments of lakes that currently do not meet national bottom lines in the NPSFM.

Option 3 with the lakes overlay was preferred because it was felt overall that this option separates out the middle, more populous section of the catchment (including Hamilton City) which may have different issues and a different community of interest from other parts of the catchment.

CSG members who did not favour this option gave these reasons:

- Separating out Hamilton was not based on natural features
- Policies will be similar across the whole Waikato River catchment
- Too much splitting of the catchment could add to compliance, monitoring and management costs
- The units chosen should split the upper and lower Waipa, because the attributes applied may not be the same in lower and upper Waipa catchment areas
- Uncertainty that there was justification for a Karapiro split.

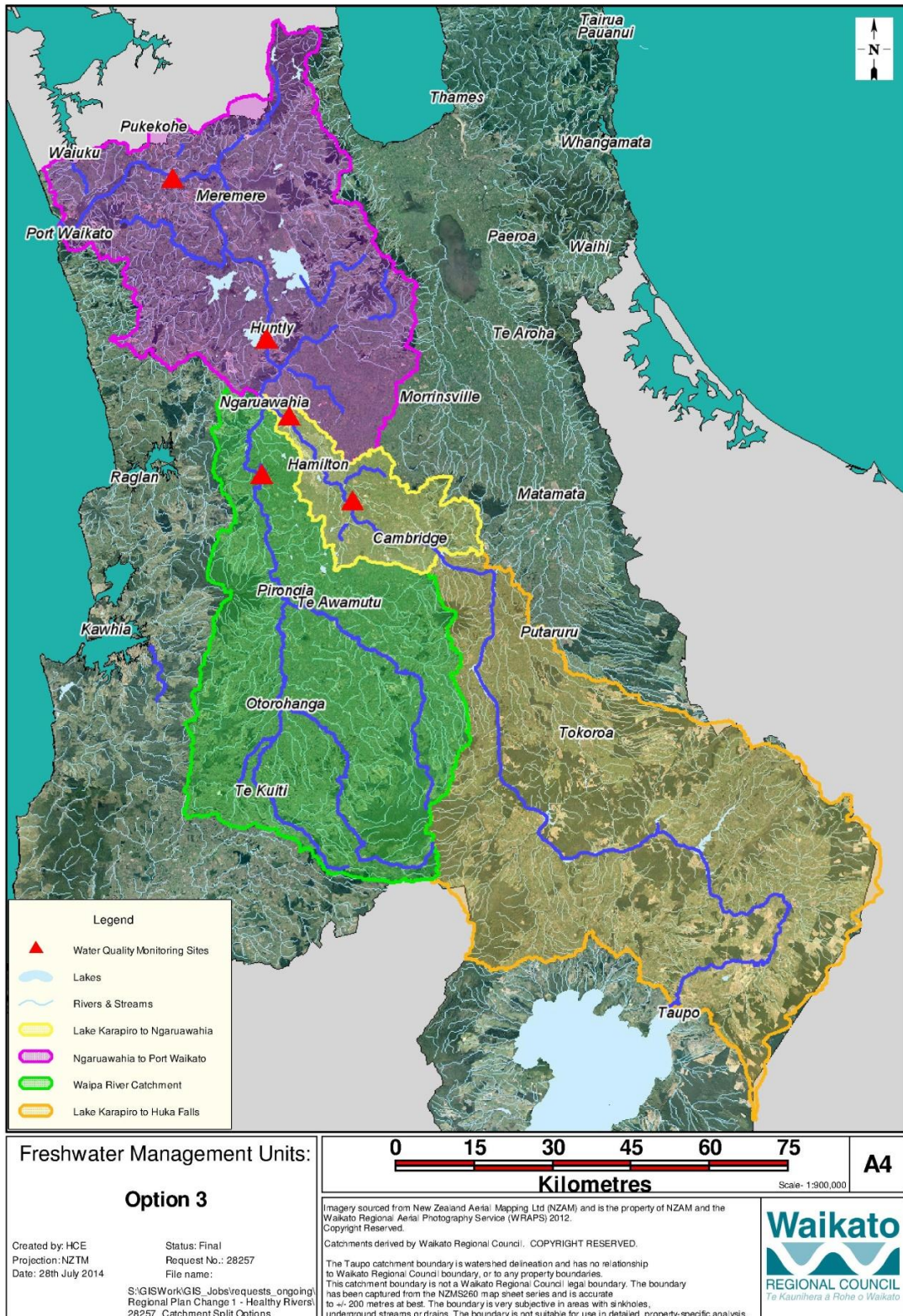
4 Summary

The option preferred by the greatest number of CSG members was Option 3, together with an overlay of selected lowland lakes and their catchments (see Appendix 1). Reasons for the choice of Option 3 as the preferred option were recorded. Some CSG members did not prefer Option 3 and the reasons for this were recorded. This paper recommends that the CSG agree to continuing work based on Option 3 in the interim, which allows them to revisit this decision and consider a different FMU option for the Waikato and Waipa catchments when more information becomes available including how the values may be applied to the FMUs. This may include an option that is a combination of those presented or other options if considered appropriate as the thinking develops.

Bill Wasley
Interim Chairperson, Collaborative
Stakeholder Group

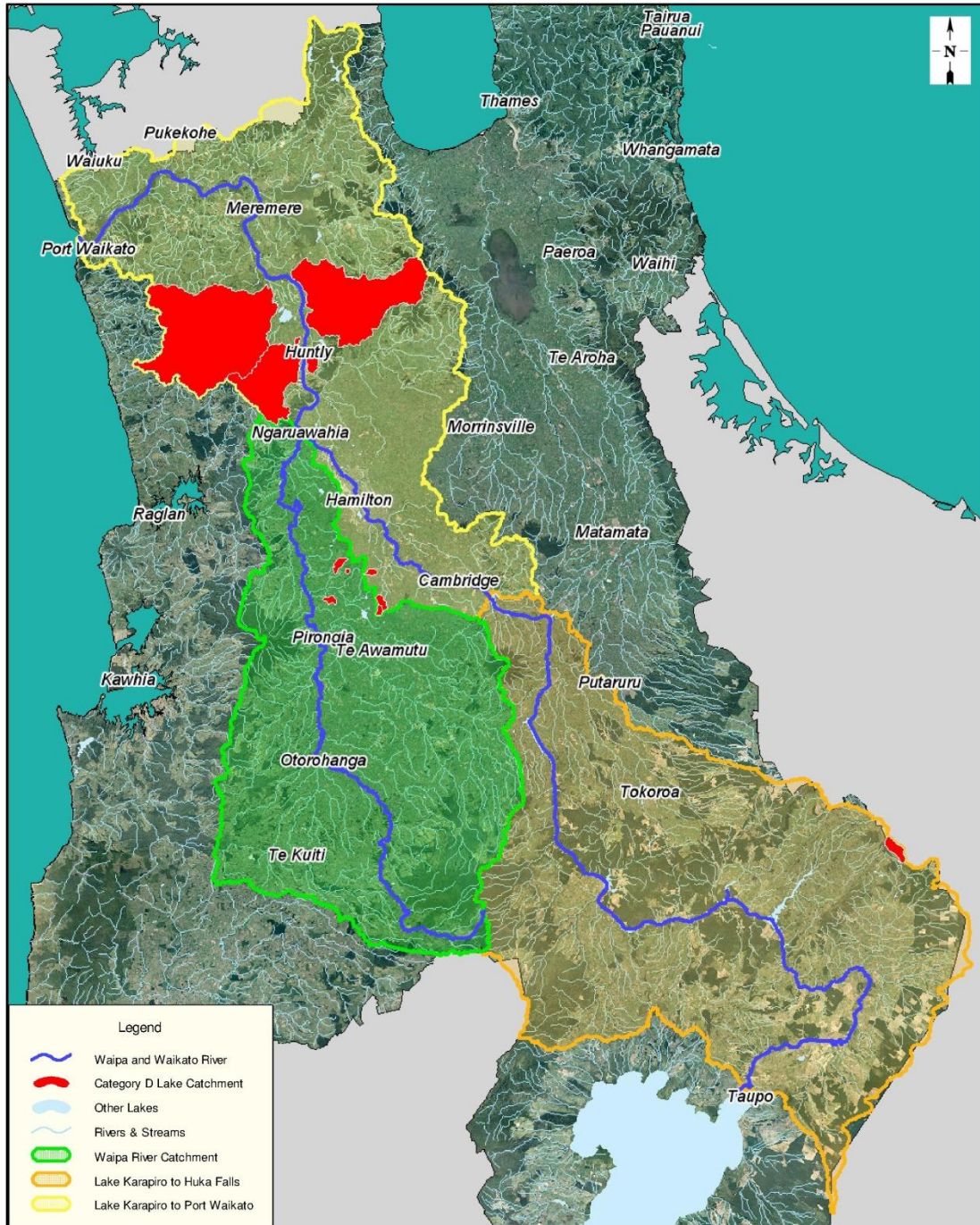
Appendix 1: FMU Option 3 for the Waikato and Waipa catchments

Map source (DM# 3121490 dated 1 August 2014) Freshwater Management Unit options for consideration by the Collaborative Stakeholder Group. Technical Leaders Group report for discussion at CSG workshop 5.



Selected lowland lakes overlay

Selected lowland lakes and their catchments are shown in the monitored lakes map, which can be considered as an overlay for Option 3. Map source (DM# 3121490).



Freshwater Management Units:		0 15 30 45 60 75		A4
Monitored Lakes		Kilometres		
Created by: HCE Projection: NZTM Date: 28th July 2014	Status: Final Request No.: 28257 File name:	Imagery sourced from New Zealand Aerial Mapping Ltd (NZAM) and is the property of NZAM and the Waikato Regional Aerial Photography Service (WRAPS) 2012. Copyright Reserved. Catchments derived by Waikato Regional Council. COPYRIGHT RESERVED. The Taupo catchment boundary is watershed delineation and has no relationship to Waikato Regional Council boundary, or to any property boundaries. This catchment boundary is not a Waikato Regional Council legal boundary. The boundary has been captured from the NZMS260 map sheet series and is accurate to +/- 200 metres at best. The boundary is very subjective in areas with sinkholes, underground streams or drains. The boundary is not suitable for use in detailed, property-specific analysis.		
S:\GISWork\GIS_Jobs\requests_ongoing\Regional Plan Change 1 - Healthy Rivers\28257_Catchment Split Options				

DISCLAIMER: While Waikato Regional Council has exercised all reasonable skill and care in controlling the contents of this information, Waikato Regional Council accepts no liability in contract, tort or otherwise howsoever, for any loss, damage, injury or expense (whether direct, indirect or consequential) arising out of the provision of this information or its use by you.