

Criteria for *Head Start* proposals

Proposals under the Government's *Head Start* pathway will be assessed against the following criteria, which is available on the Department of Internal Affairs website.

- **Deliverability:** Proposals are realistic and demonstrate how new arrangements can be implemented in a timely manner.
- **Supports the new planning system:** Shows clear support for implementing the new planning system – including progress on spatial and natural environment plan development – and avoids or minimises disruption to that work.
- **Simplifies local governance:** Proposes more efficient regional governance arrangements, consolidating decision-making and improving alignment between a region's councils.
- **Economies of scale:** Supports regional strategic planning and effective delivery of key regional functions (such as transport and catchment management), and demonstrates responsible and affordable asset management, infrastructure investment, and service delivery.
- **Maintains local voice:** Demonstrates fair and effective representation for communities of interest and how decisions will be made at the local level, balancing urban and rural interests.

Working across communities

Waikato Regional Council undertakes a range of functions that cross local boundaries – flood protection, catchment management, coastal planning, pest control and transport to name a few. These require integrated coordination and management at a regional scale.

Catchment management		Regional public transport and transport policy
	Regional and spatial planning, policies and inter-regional strategies	
Iwi partnerships and obligations		Environmental monitoring
	Science, data and information	
Community leadership and economic development		Consenting and permitted activities
	Regional resilience – natural hazard risks, emergency response	
Compliance, monitoring and enforcement		Maritime navigation services
	Civil Defence and Emergency Management	




Te whakahoutanga o te kāwanatanga ā-rohe Local government reform

The Government's *Simplifying Local Government* reform programme aims to build a simpler, more efficient local government system, reducing the number of councils across New Zealand through the creation of unitary authorities.

Unitary authorities combine the roles of city and/or district councils and regional councils into one entity.

We want the best outcome for our region and are committed to providing all the city and district councils in our rohe with the support they need to understand regional council functions and how these may be delivered in a future model.

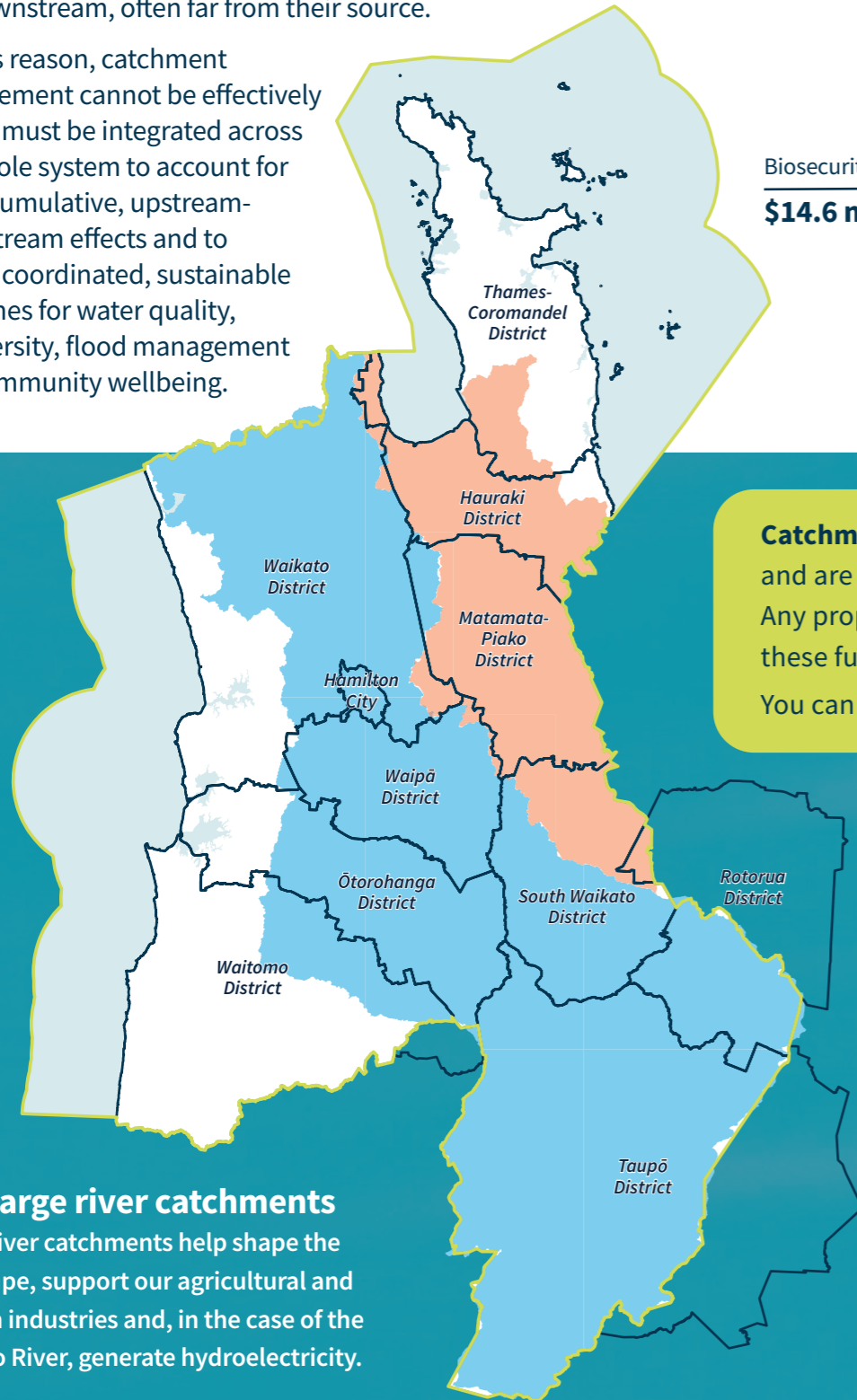
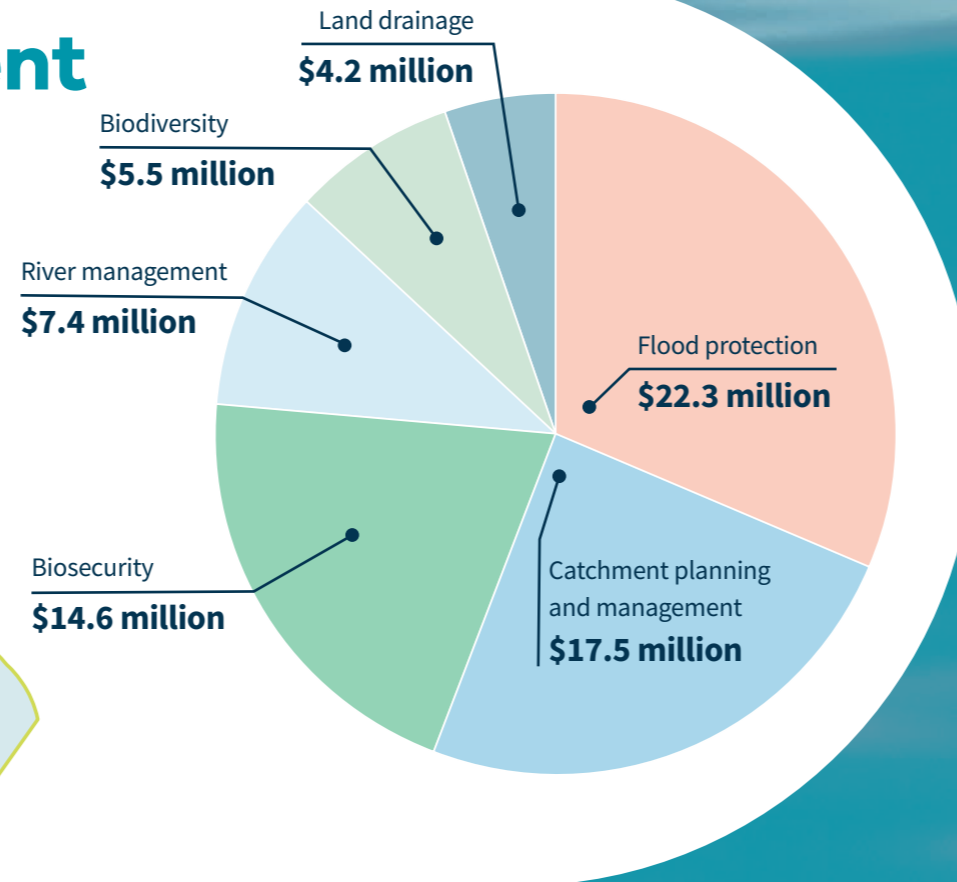
 waikatoregion.govt.nz/simplifying-local-government

 0800 800 401

Catchment management

A catchment is an area of land where all rainfall and runoff drains to a common outlet – such as a river, lake or coastal estuary – linking land, water, ecosystems and human activity into a single interconnected system. Because water flows across boundaries and carries sediments, nutrients and contaminants with it, the impacts of land use in one part of the catchment are felt downstream, often far from their source.

For this reason, catchment management cannot be effectively split; it must be integrated across the whole system to account for these cumulative, upstream-downstream effects and to ensure coordinated, sustainable outcomes for water quality, biodiversity, flood management and community wellbeing.



Catchment management and transport are regional council functions and are specifically identified in the criteria for the *Head Start* pathway. Any proposals submitted through this pathway must demonstrate how these functions will be supported and maintained. You can learn more about these key functions on this page.

Two large river catchments

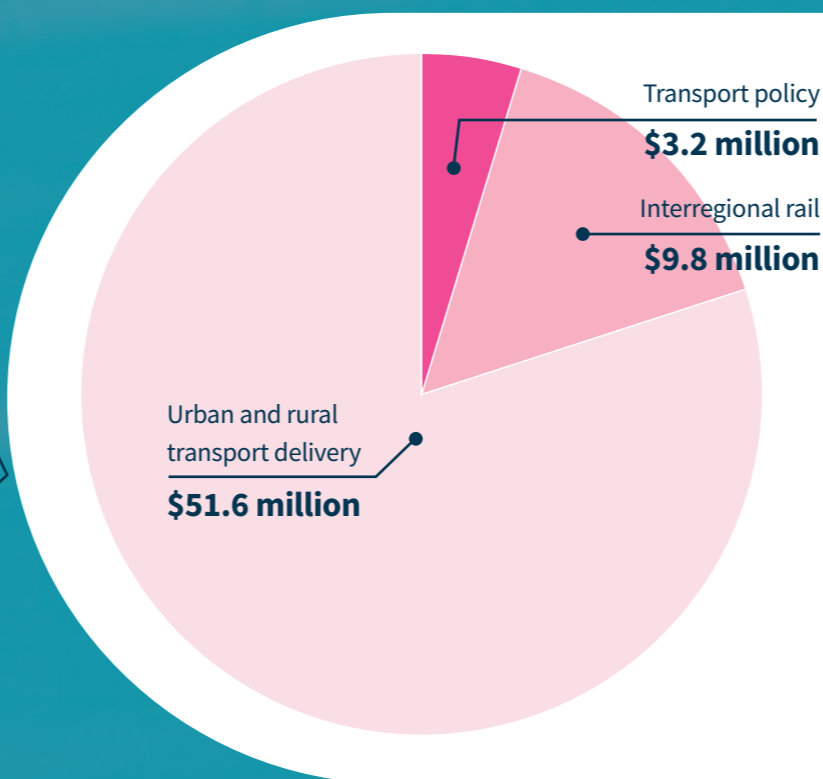
These river catchments help shape the landscape, support our agricultural and tourism industries and, in the case of the Waikato River, generate hydroelectricity.

- Waikato Region Boundary
- Waikato River Catchment
- Territorial Authority Boundaries
- Waihou Piako ICM Zone

Waikato Regional Council's statutory obligations to iwi authorities

- 178 Current Treaty settlement obligations
- 215 Current Joint Management Agreement obligations
- 27 Current Co-managed Lands Agreement obligations
- 77 Upcoming Treaty settlement obligations
- 7 Treaty settlements not yet at Bill stage
- 7 Pending Mana Whakahono ā Rohe agreements
- 80 Statutory acknowledgement areas

Te Ture Whaimana o te Awa o Waikato – The Vision and Strategy for the Waikato River has legal status as the primary direction-setting document relating to the Waikato and Waipā rivers, trumping all other plans.



Regional public transport and transport policy

Waikato Regional Council develops the plan which prioritises funding for all land transport activities in the region. This underpins bus, train, Total Mobility (a scheme designed to increase the mobility of people with disabilities) and community transport services in the Waikato. Delivery of these services requires a regional approach because travel patterns, funding and infrastructure extend across multiple communities rather than stopping at local boundaries.